



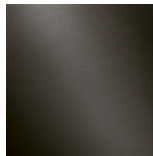
Kitchen - Tara Ultra

Single-lever mixer pull-down with spray function - Dark Platinum matte

Article number: 33 870 875-99 0010



- 9-1/2" Projection
- Swiveling spout 360°
- Optional restriction, swivels 110°
- Laminar and spray function
- Total height 19-5/8"
- 9-1/2" height to aerator/spout outlet
- 1-3/8" hole diameter
- 2x 10 mm flexible supply lines including 3/8" US adapters
- 59" metal shower hose
- Sprayface with descaling system
- Water flow rate limited to max. 1.5 gpm
- lead-free
- (ADA)
- Internal backflow preventer.
- Push button locks into spray mode when pressed. To switch back to laminar flow the water must be turned off.



Dark Platinum matte

All dimensions in mm / inch = mm x 0,0394



Kitchen - Tara Ultra

Single-lever mixer pull-down with spray function - Dark Platinum matte

Article number: 33 870 875-99 0010



Kitchen - Tara Ultra

Single-lever mixer pull-down with spray function - Dark Platinum matte

Article number: 33 870 875-99 0010

Other surface finishes



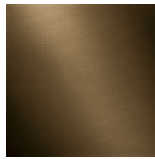
polished chrome

33 870 875-00 0010



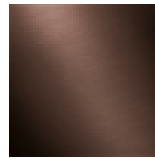
platinum matte

33 870 875-06 0010



Dark Brass matte

33 870 875-16 0010



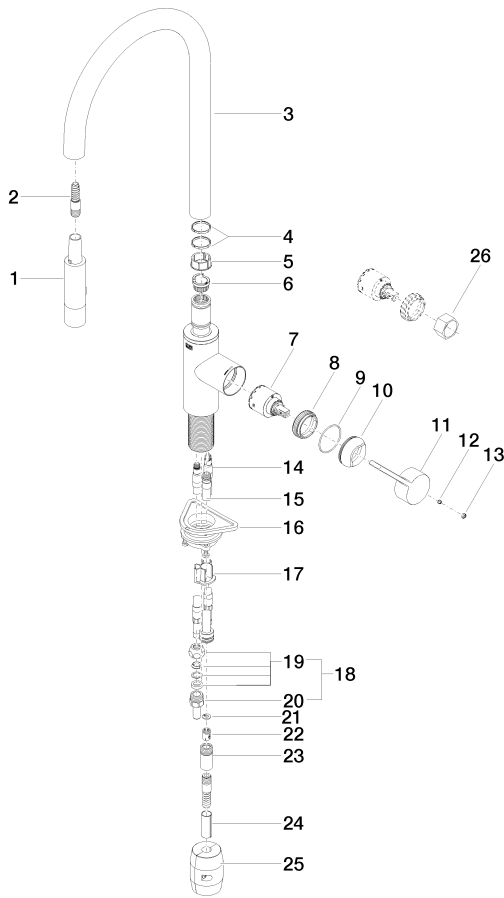
Dark Bronze matte

33 870 875-17 0010

More custom finish options are available via special production (xTra Service). Please see our finish matrix for availability and pricing or contact a Dornbracht representative.

Kitchen - Tara Ultra
 Single-lever mixer pull-down with spray function - Dark Platinum matte
 Article number: 33 870 875-99 0010

Spare parts list



Number	Item Number	Designation	Number of units
1	04 12 11 148 00-99	shower	1
2	04 30 02 120 00-99	hose	1
3	90 28 22 304 00-99	spout	1
4	09 28 10 160 90	Ring -	1
5	09 18 40 186 90	Hood / sleeve -	1
6	09 30 11 203 90	Automatic flow rate regulator -	1
7	90 15 05 062 00 90	EHM cartridge -	1
8	09 23 10 072 90	Mounting bracket -	1
9	09 14 10 190 90	Washer -	1
10	09 28 30 030-99	cover	1
11	09 20 87 020-99	handle	1
12	09 31 11 063 90	Mounting bracket -	1
13	90 31 20 087 00-99	plug	1
14	04 30 04 098 00 90	Tube -	2
15	04 28 20 066 00 90	Pipe -	1
16	04 30 11 040 00 90	Mounting bracket -	1
17	09 20 93 056 90	Tube -	1
18	04 24 04 222 00-99	adaptor	2
19	04 23 30 031 01-07	Wall connection - Rough nickel-plated	2
20	09 24 04 222 10-99	adaptor	2
21	09 16 01 023 90	Ring -	1
22	09 23 01 096 90	Application -	1
23	90 24 03 253 00 90	Wall connection -	1
24	09 30 03 038 90	Tube -	1
25	04 21 50 010 00 90	Mounting bracket -	1
26	09 30 09 031 90	assembly wrench -	1